

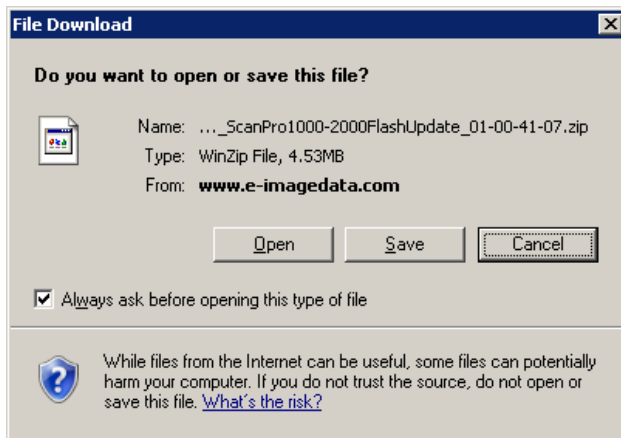
## ScanPro 1000-2000 Camera Firmware Update

Note: If your operating system is Windows Vista or Windows 7, turn off UAC (user account control) and restart your computer before continuing.

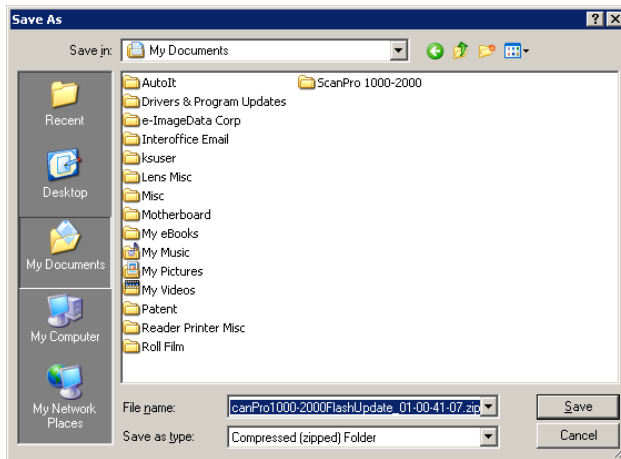
- 1) Click on the button "DOWNLOAD DRIVER" to download the driver .

The following graphics are specific to a Windows XP operating system using the web browser "Internet Explorer". Other operating systems and web browsers will have similar graphics.

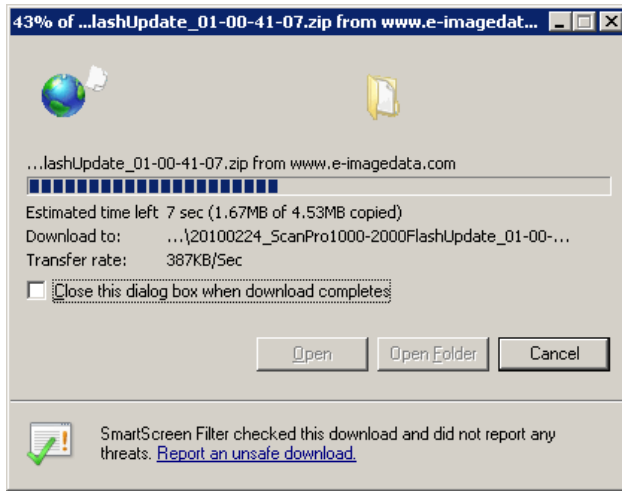
- 2) A "File Download" window such as the one below will appear. Click "Save".



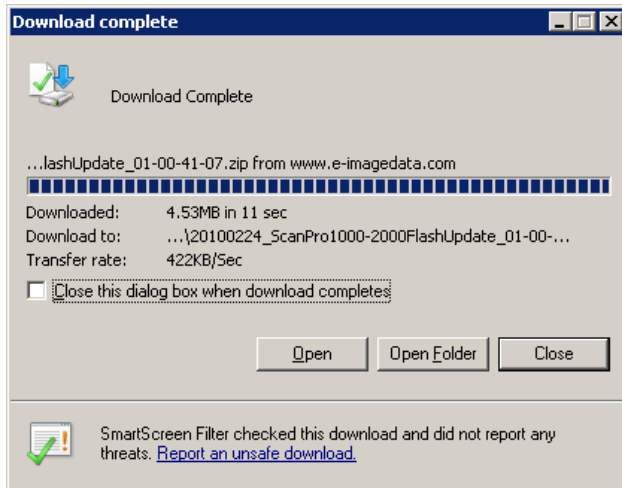
- 3) A "Save As" window such as the one below will appear. Select the desired "Save in" location and click "Save".



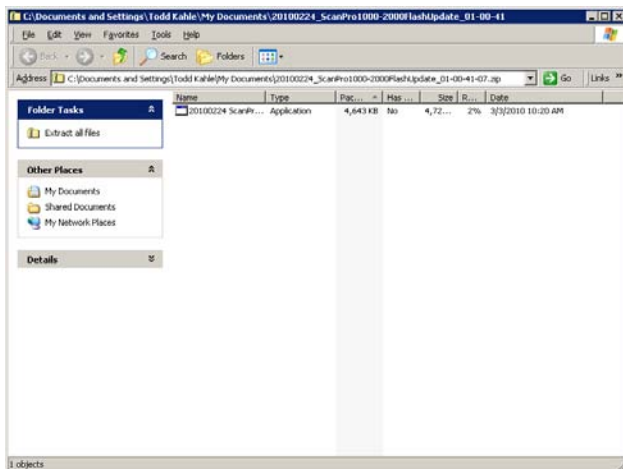
4) A download window such as the one below will appear indicating download progress.



5) When the download is complete, a window such as the one below will appear. Click "Open".

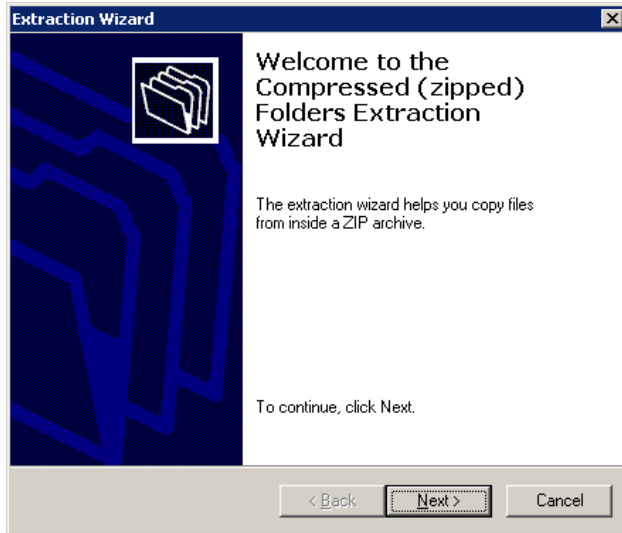


6) A window such as the one below will appear. Click "Extract all

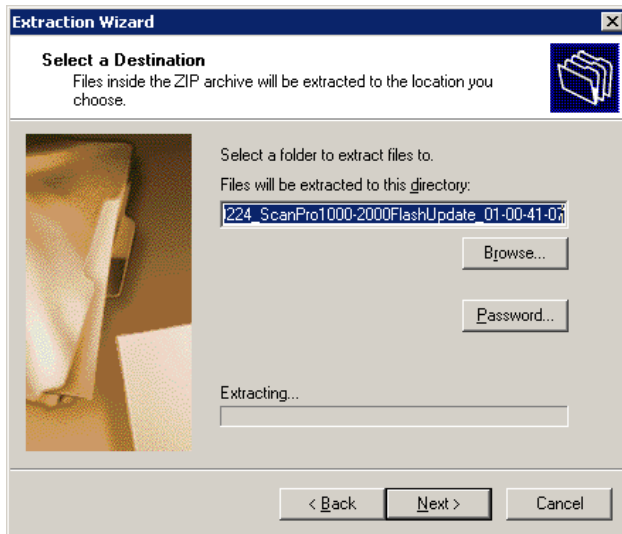


files".

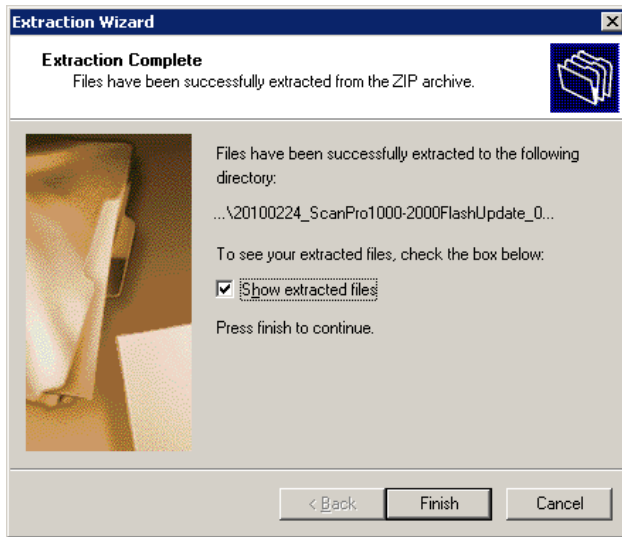
7) A window such as the one below will appear. Click “Next”.



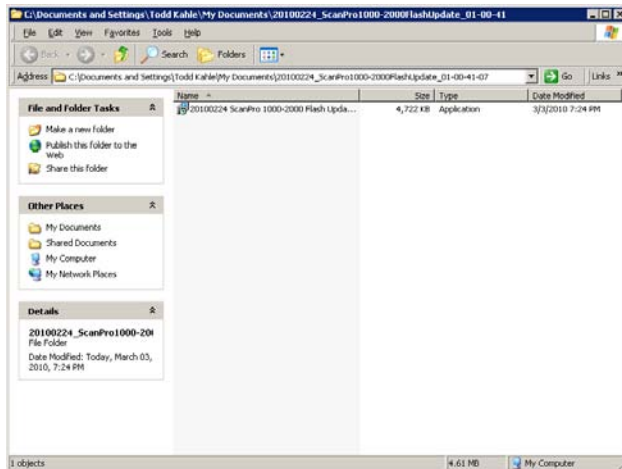
8) A window such as the one below will appear. Click “Next”.



9) A window such as the one below will appear. “Show extracted files” check box should be checked. Click “Finish”.



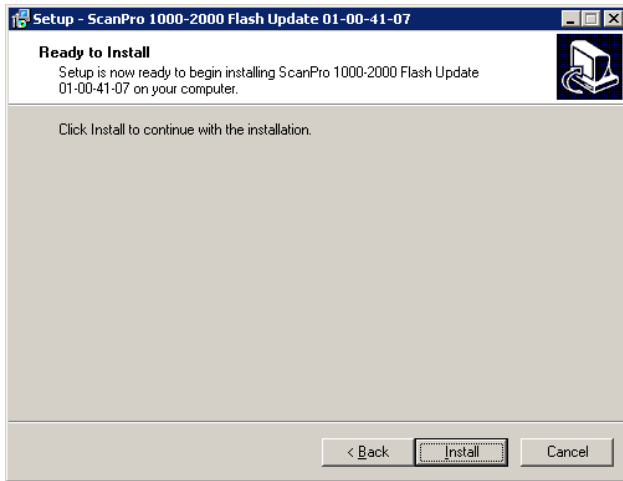
10) A window such as the one below will appear. Double click on the file “20100224 ScanPro 1000-2000 Flash Update 01-00-41-07.exe”.



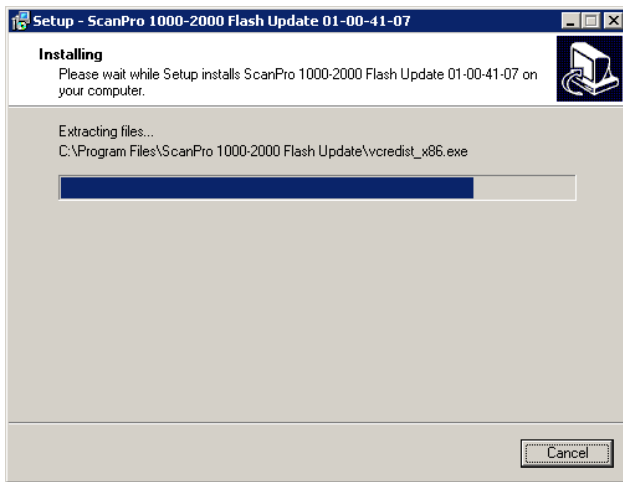
11) The following “Setup” window will appear. Click “Next”



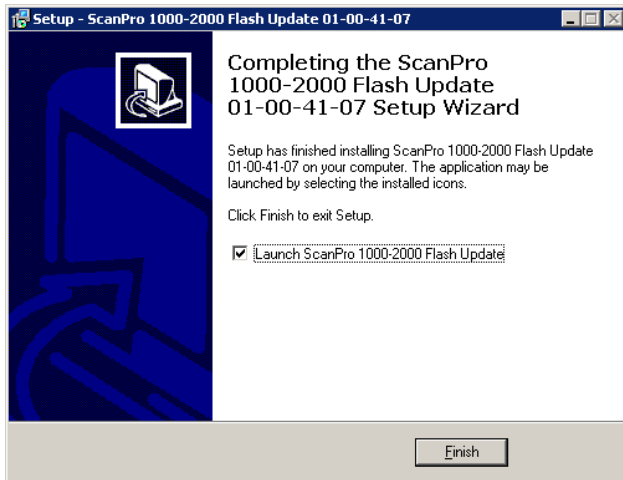
12) The following "Setup" window will appear. Click "Install"



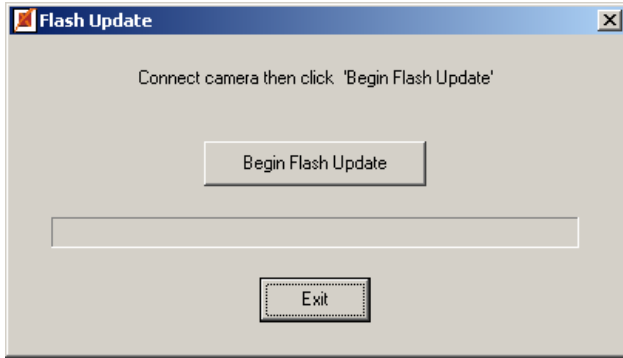
13) The following "Setup" window will appear indicating installation progress.



14) When installation is complete the following "Setup" window will appear. Click "Finish".



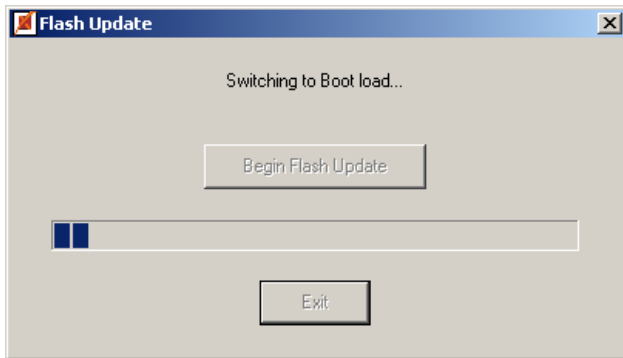
15) The following “Flash Update” window will appear. Click “Begin Flash Update”.



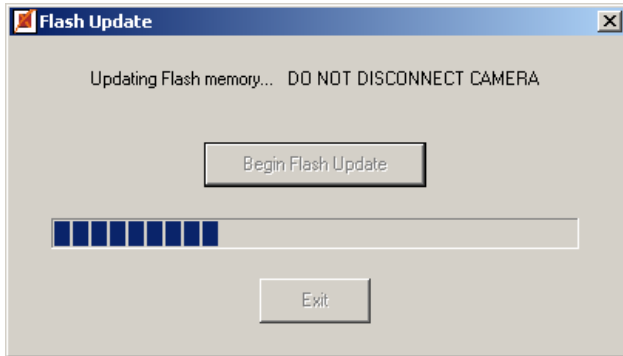
16) If the following message appears the camera firmware is already up to date. Click “Cancel” and go to step 22.



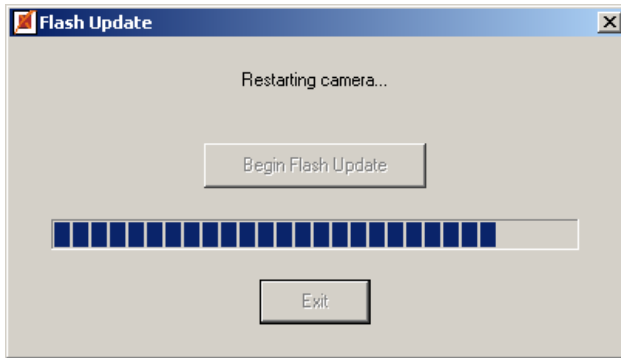
17) The following “Flash Update” window will appear.



18) The following “Flash Update” window will appear.



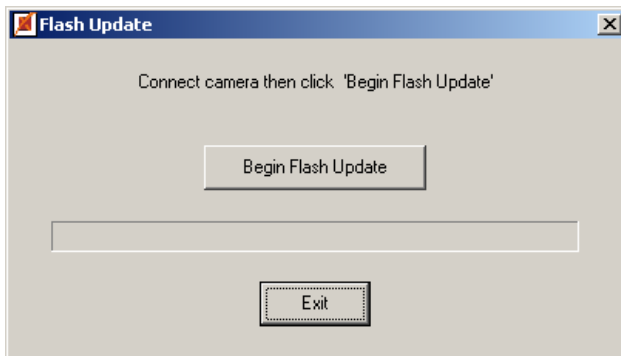
19) The following "Flash Update" window will appear.



20) When the update is complete the following message will appear. Click "OK".



21) The following "Flash Update" window will appear. Click "Exit".



22) The camera firmware update is complete.